

REC TWINPEAK 25 MONO 72 SERIES

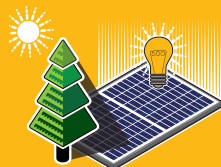
PREMIUM SOLAR PANELS 100% MADE IN SINGAPORE

REC TwinPeak 25 Mono 72 Series solar panels feature an innovative design with high efficiency and an industry-leading lightweight, yet robust construction, enabling customers to get the most out of the installation area.

Combined with the product quality and reliability of a strong and established European brand, REC TwinPeak 25 Mono 72 Series panels are ideal for all types of commercial rooftop and utility installations worldwide.



**REDUCES BALANCE OF
SYSTEM COSTS**



**IMPROVED PERFORMANCE
IN SHADED CONDITIONS**

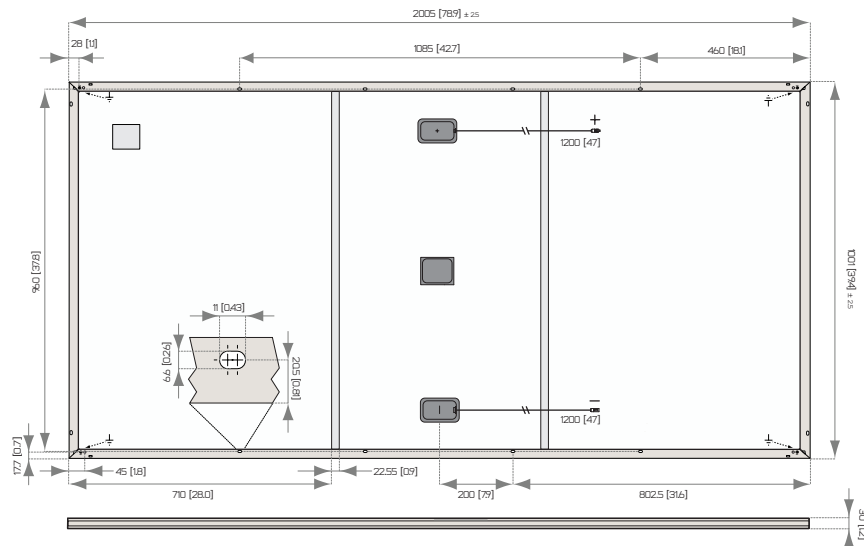


**INDUSTRY-LEADING
LIGHTWEIGHT 72-CELL PANEL**



**100%
PID FREE**

REC TWINPEAK 25 MONO 72 SERIES



All measurements in mm [in]

ELECTRICAL DATA @ STC		Product code*: RECxxxTP2SM 72						
Nominal Power - P_{MAX} (Wp)		370	375	380	385	390	395	400
Watt Class Sorting - (W)		0/+5	0/+5	0/+5	0/+5	0/+5	0/+5	0/+5
Nominal Power Voltage - V_{MPP} (V)		39.8	40.1	40.3	40.5	40.7	40.9	41.1
Nominal Power Current - I_{MPP} (A)		9.30	9.36	9.43	9.51	9.58	9.66	9.73
Open Circuit Voltage - V_{OC} (V)		47.0	47.4	48.0	48.6	49.2	49.8	50.4
Short Circuit Current - I_{SC} (A)		10.02	10.04	10.05	10.07	10.08	10.09	10.10
Panel Efficiency (%)		18.4	18.7	18.9	19.2	19.4	19.7	20.0

Values at standard test conditions STC (airmass AM 1.5, irradiance 1000 W/m², cell temperature 77°F (25°C).
At low irradiance of 200 W/m² (AM 1.5 and cell temperature 77°F (25°C)) at least 95% of the STC module efficiency will be achieved.
*xxx indicates the nominal power class (P_{MAX}) at STC, and can be followed by the suffix XV for modules with a 1500 V maximum system rating.

ELECTRICAL DATA @ NMOT		Product code*: RECxxxTP2SM 72						
Nominal Power - P_{MAX} (Wp)		276	280	283	287	290	295	298
Nominal Power Voltage - V_{MPP} (V)		37.1	37.3	37.5	37.7	37.9	38.1	38.3
Nominal Power Current - I_{MPP} (A)		7.44	7.49	7.54	7.60	7.66	7.73	7.78
Open Circuit Voltage - V_{OC} (V)		43.7	44.1	44.7	45.3	45.8	46.4	46.9
Short Circuit Current - I_{SC} (A)		8.02	8.03	8.04	8.06	8.06	8.07	8.08

Nominal cell operating temperature NOCT (800 W/m², AM 1.5, windspeed 1 m/s, ambient temperature 68°F (20°C)).
*xxx indicates the nominal power class (P_{MAX}) at STC, and can be followed by the suffix XV for modules with a 1500 V maximum system rating.

CERTIFICATION



UL 1703, Fire classification: Type 1 (1500 V XV); Type 2 (1000 V);
IEC 61215, IEC 61730, IEC 62804 (PID), IEC 62716 (Ammonia),
IEC 61701 (Salt Mist level 6),
ISO 9001: 2015, ISO 14001: 2004, OHSAS 18001: 2007

WARRANTY

20 year product warranty
25 year linear power output warranty
Max. performance degradation of 0.5% p.a. from 97.5% in year 1
See warranty conditions for further details.

20.0% EFFICIENCY
20 YEAR PRODUCT WARRANTY
25 YEAR LINEAR POWER OUTPUT WARRANTY

GENERAL DATA

Cell type: 144 half-cut monocrystalline PERC cells
6 strings of 24 cells in series
Glass: 0.13" (3.2 mm) solar glass with anti-reflection surface treatment
Backsheet: Highly resistant polymeric construction
Frame: Anodized aluminum
Support bars: Anodized aluminum
Junction box: 3-part, 3 bypass diodes, IP67 rated in accordance with IEC 62790
Cable: 4 mm² solar cable, 1.2 m + 1.2 m in accordance with EN 50618
Connectors: Stäubli MC4-Evo2 PV-KBT4-EVO-2/PV-KST4-EVO-2 (4 mm²) in accordance with IEC 62852, IP68 only when connected
Tonglin TL-Cable01S-F (4 mm²) in accordance with IEC 62852, IP68 only when connected
Origin: Made in Singapore

MAXIMUM RATINGS

Operational temperature: -40... +185°F (-40... +85°C)
Maximum system voltage: 1000 V / 1500 V
Design load (+): snow 75.2 lbs/ft² (3600 Pa)*
Maximum test load (+): 112.8 lbs/ft² (5400 Pa)*
Design load (-): wind 33.4 lbs/ft² (1600 Pa)*
Maximum test load (-): 50.1 lbs/ft² (2400 Pa)*
Max series fuse rating: 25 A
Max reverse current: 25 A
* Calculated using a safety factor of 1.5
* See installation manual for mounting instructions

TEMPERATURE RATINGS

Nominal Module Operating Temperature: 44.6°C (±2°C)
Temperature coefficient of P_{MAX} : -0.37 %/°C
Temperature coefficient of V_{OC} : -0.28 %/°C
Temperature coefficient of I_{SC} : 0.04 %/°C
*The temperature coefficients stated are linear values

MECHANICAL DATA

Dimensions: 78.9" x 39.4" x 1.2" (2005 x 1001 x 30 mm)
Area: 21.6 ft² (2.01 m²)
Weight: 48.5 lbs (22 kg)

Specifications subject to change without notice.

Ref: PM-DS-07-23 Rev-C 01.20

Founded in Norway in 1996, REC is a leading vertically integrated solar energy company. Through integrated manufacturing from silicon to wafers, cells, high-quality panels and extending to solar solutions, REC provides the world with a reliable source of clean energy. REC's renowned product quality is supported by the lowest warranty claims rate in the industry. REC is a Bluestar Elkem company with headquarters in Norway and operational headquarters in Singapore. REC employs around 2,000 people worldwide, producing 1.5 GW of solar panels annually.

